

www.thomas.ksu.edu

Thomas County

K-State Research and Extension News

*Knowledge
for Life*

Laurel Despain

4-H & Youth Development

ldepain@ksu.edu

Joanna Johnson

Office Professional

joannajohnson@ksu.edu

May 2024

Volume: 190

Fair Theme

It's time to start gearing up for Fair! Get your ideas ready for your club booths, parade floats and more. This year's theme is:

“Fiesta at the Fair!”

In This Issue:

Page 2:

- Upcoming Events

Page 3:

- Safety on the Farm
- Sustainable Grazing Practices

Page 4:

- Strawberry Fun Facts & Grilling Safety
- Opportunities to watch recorded workshops and webinars on topics related to producing, preserving and selling local foods

Pages 5-6: 4-H Tidbits

- Important 4-H Deadlines
- State Fair Information and Rule Changes
- Discovery Days, Insect Spectacular & Educational Webinar Series information



K-STATE
Research and Extension

K-State Research and Extension is an equal opportunity provider and employer.

www.ksre.ksu.edu

KANSAS STATE UNIVERSITY AGRICULTURAL EXPERIMENT STATION AND COOPERATIVE EXTENSION SERVICE

Upcoming Events

May

1st--K-State Garden Hour:
Understanding Water
Sources for Your Garden



[Register here!](#)

3rd--First Friday e-Call: State Housing
Resources

[Register here!](#)

**4th--Safe Tractor & Machinery Operation
Training-** in Great Bend

[Register here!](#)

**7th & 8th--FSMA Produce Safety Grower
Training-** online

[Register here!](#)

9th--GAPS Food Safety plan workshop-
online

[Register here!](#)



**14th & 16th--Grant Writing
Workshop-** online

[Register here!](#)

**23rd--Safe Tractor & Machinery
Operation Training-** in Salina

[Register here!](#)

**23rd--Kansas Wheat Rx Seminar & Field
Day-** in Phillipsburg

[Register here!](#)

27th--Memorial Day:
Extension Office Closed



June

5th--K-State Garden Hour: Growing Cut
Flowers for the Home & Farmers Market

[Register here!](#)

7th--First Friday e-Call: Is
Your Industrial Site Ready for
Development?

[Register here!](#)



July

3rd--K-State Garden Hour: Success with
Cacti and Succulents

[Register here!](#)

4th--Independence Day:
Extension Office Closed



12th--First Friday e-Call: Moving In,
Moving Out, Moving Over: The Future of
Housing Supply

[Register here!](#)

**13th--Thomas County Fair Open Class
Horse Show**

**20th--Thomas County Fair 4-H and Open
Class Agility & Rally Shows**

**21st--Thomas County Fair 4-H and Open
Class Showmanship & Obedience
Shows**

**24th-- Quarterly Local Food Virtual Town
Hall**

[Register here!](#)

**29th--August 3rd--Thomas County Fair
Week!!**



Safety on the Farm: Survey to aid Kansas agriculture

In every business or industry, accidents happen. Sometimes those mishaps cost money only, but in many cases, it can mean serious injury or even death.

Tawnie Larson, a project consultant for the [Kansas Agriculture Safety and Health program](#) at Kansas State University, said the most common agriculture injuries are musculoskeletal due to falls, slips or trips; exposure to harmful substances or environments; over-exerting oneself; and sprains, strains and tears.

Larson said that in Kansas, fatalities are most common among those age 45 and older, and are usually related to machinery and transportation – including tractor rollovers, interacting with livestock, and confined spaces. Those younger are also impacted; In 2020, eight Kansas youth under age 16 died in agriculture-related accidents, and 141 agricultural workers between ages 20 and 44 died on the job.

The sobering statistics on agricultural accidents are part of the motivation for an upcoming survey of Kansas farmers and ranchers, to be administered by the Kansas Agriculture Safety and Health program.

“There hasn’t been an agriculture safety program for producers and the industry in Kansas for several years,” Larson said. “As we begin building a program, we want to find out the concerns of those that work in the industry.”

The survey is available online at <https://www.k-state.edu/kash>.

“The purpose of the survey is to hear from Kansans about what they want to see in ag safety and health programming, how they want to receive the information, and what type of work they do in Kansas agriculture,” Larson said.

Kansas agriculture producers make up approximately 60,000 operations and more than 45 million acres. The state’s farmers raise 6.2 million

head of cattle, 2 million pigs among other livestock. The top crops grown include wheat, corn, soybeans, sorghum and hay. When an injury occurs on the farm, Larson said the median days away from work is 10 days.

“Health and safety differ between planting and harvest seasons; between types of livestock; and between row crop farmers and cattle ranchers,” Larson said. “We want to know what those perceptions are so we can offer the most useful and timely information in the methods that work best for them.”

According to Larson, information from the survey will be used to development programs offered through K-State Research and Extension, and to apply for future grants to support programs in the state. The survey should take about 10 minutes to complete, she said.

“We all want our work environments to be more healthier and safer, and this is one way that farmers and ranchers can help,” Larson said. “Farmers and ranchers typically don’t retire, so we want to make sure that they are able to continue to do what they love for as long as they would like.

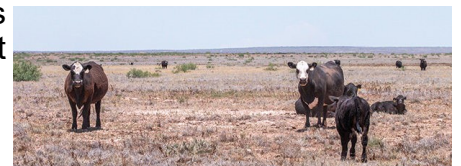
K-State experts discuss sustainable grazing practices

K-State Research and Extension cow-calf specialist Jason Warner and ruminant nutritionist Logan Thompson talk about how sustainability fits into a cow-calf system.

“Sustainability is a bit of a buzz word; it means a lot of different things to a lot of people,” Thompson said. “Sustainability is not just environment. We also have economic considerations and other social considerations. If our beef cattle producers are not economically viable...then they’re not sustainable.”

Thompson notes that having cows that fit the producer’s management strategy and landscape – and birth a calf each year – are keys to longevity in the cow-calf business.

“Grazing operations are very complex, as our producers know,” Thompson said. “It’s not as easy as in our confinement operations to control what that animal is doing and eating every single day.” The full video is available online at <https://youtu.be/xCXKbYLThcQ>.



It's Strawberry Season!



Strawberries are the first fruit to ripen in the spring! Fresh strawberries are tasty by themselves or in any meal or beverage. Here are some fun facts!

- Eight strawberries contain more vitamin C than one orange.
- A serving (1 cup) of strawberries has twice as much fiber as a serving of grapes.
- Strawberry flavor is influenced by weather, the variety, and stage of ripeness when harvested.
- On average, there are 200 seeds in a strawberry.

Learn more at <https://extension.illinois.edu/small-fruits/strawberries> and www.californiastrawberries.com/

Learn about Preserving Strawberries at www.ksre.ksu.edu/bookstore/pubs/MF1178.PDF

Recordings of Local Food Producer Workshops

Thanks to those who attended the 2024 Local Food Producer Workshop in February!

If you were not able to attend, there are recordings from the Olathe sessions available for you to view. The recordings are on the From the Land of Kansas website at <https://www.fromthelandofkansas.com/page/farmers-market-regional-workshops>. We look forward to offering these workshops again in 2025.



Listen to the Field-to-Fork Webinars

Did you miss out on the [Field-to-Fork](#) webinars offered by North Dakota State University Extension? You are in luck! The recordings are all available.

Take an hour break and listen to these webinars which are focused on growing, preparing, preserving, and selling vegetables and fruits. They are a multidisciplinary, multi-state effort to get expertise. Along with the 2024 webinars, there are recordings from previous years.



Fire Up the Grill!

Summer is almost here, but many grills are already getting a work out! Here are some tips for successful grilling.

- Keep meat refrigerated until ready to cook.
- Remove visible fat from meat to reduce flare-ups and charring.
- Marinate raw meats in the refrigerator. Discard marinade if not using for sauce.
- Use a medium heat for even cooking and juicy meat. Charcoal should be covered in gray ash.
- Use tongs instead of forks to keep meat juicy.

Check meat doneness with a thermometer, not color. This [temperature chart](#) is a handy reference.

Keep raw meats away from ready-to-eat foods to prevent cross contamination.





Project Enrollment



May 1st is the last day to add or drop projects on 4-H Online. Please log-in to update which projects you will or will not be participating in this year at Fair.

Camp Lakeside

Camp Lakeside will be held on June 10th-11th this year. We have 10 camper spots (ages 7-9) available. **Please register [here](#)**, we already have our counselor positions filled for this year. Registration is due by May 1. Get wild at Camp Lakeside!

Photography Project

A 4-H Shutterbug Photography Workshop will be held May 4th at the Lee Richardson Zoo in Garden City. Find more information [here](#).

Shotgun Project

The Shotgun Project is getting ready to begin their season. Members must attend one of the two safety meetings in May. Stay tuned for specific dates!

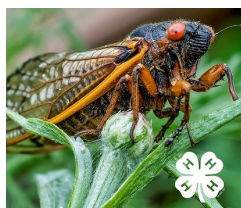
Discovery Days

Discovery Days offers in-depth training through educational sessions from content and youth development experts. Members will learn new ideas, techniques, and skills they can use personally, in their 4-H clubs, and communities. It will be held June 5-7 on the K-State Campus. You can learn more about the event and objectives and you'll find the registration [here](#).

Spring Shows are Coming!

CCC Classic- Spring Livestock Show

May 18th on the Fairgrounds. [Register here!](#)



Insect Spectacular

The [Kansas 4-H Insect Spectacular](#), a two-day state-wide entomology workshop, will be held June 21-22, 2024 in Hays, Kansas. Classes will include basic pinning, basic and advanced identification, insect photography, and much more. Deadline: May 30th, [click here](#) to register!

Horse Papers

Horse Identification papers are due to the Extension Office on May 1st. The form must be front and back only, not two separate pages and must have a standard-sized photo attached with all markings visible.



Goats Across Kansas Series

Our goal is to increase the knowledge of Kansas youth participating in the goat project and help them to become more knowledgeable about the goat industry. Join us while we meet with a veterinarian and a goat breeder as they speak about common illnesses in goats and daily care that leads to success in the ring. As always, participants will be given many opportunities to ask questions of our speakers. The third session is titled, "Quality Matters" and will be held May 13th at 6:30 pm (it will be recorded for those who register). Registration coming soon.



If you are interested in the swine, beef and/or sheep project(s) as well and missed out on those series, visit [here](#) to view past sessions.

Dog Club Meetings

Pawsome Paws, the Thomas County 4-H Dog Club, began their spring practices on March 12th. Meetings are held on Tuesdays at 7pm at the 4-H Building. Kids need to bring a copy of vaccine records as all dogs are required to have a current Distemper/Parvo (DHLP), Kennel Cough (Bordetella), and Rabies vaccine before the dog can come to practice. Angie will keep a copy of the vaccine record and the 4-H member will keep the original. Please note, there have been a few changes in Agility which will be covered at practice. For more information, please contact Angie Harris at 785-443-2797.

National Shooting Sports Qualifier

Thomas County 4-H Member, Allison Zimmerman, qualified for Nationals in Air Pistol. Join us in congratulating her on this outstanding accomplishment and wish her luck as she competes in June in Grand Island, Nebraska!





Geology Field Trip

A geology field trip is scheduled for June 14-16 in Wakeeney. A variety of workshops and activities are planned along with a variety of stops. Project members are encouraged to participate in judging and quiz bowl. A catered supper will be provided Saturday evening for \$15/person and a variety of geology publications will be available to purchase. The registration deadline is May 24. You can visit [here](#) for more information. Indoor camping is available at the Trego Community High School for those accompanied by a parent/guardian and other lodgings can be found in Wakeeney. Register online [here](#).

2024 Fair Livestock Weights Reminder

Please be aware of the weights, as some of the requirements changed in 2023. Livestock weights for the 2024 Thomas County Fair are as follows:

- Beef- 1000-1800
- Sheep-100-160
- Swine- 225-350
- Goats- 50-125

Club Attendance

New for the 2023-2024 year, 4-H members wishing to participate in the livestock auction are required to attend 5 club meetings between the months of August 2023 and July 2024 and complete the Youth for the Quality Care of Animals (YQCA) training each year. Members must attend meetings for the club they are enrolled in on 4-H Online. Business must be conducted at the meeting in order for the meeting to qualify for attendance. Club members and leaders can check their attendance record by going to their club's page on the BAND App.

4-H Camp 2024

Ready, set, register! 2024 4-H camp sessions at [Rock Springs Ranch](#) are now available for registration. This includes half week, full week, Leaders in Training (LIT), and Counselors in Training (CIT) sessions. A full list of session dates and costs for Summer Camp 2024 and additional details can be found [here](#).

State Livestock Nominations

June 15: Small Livestock & Commercial Heifers nomination deadline. The Rookie Guide provides step-by-step instructions [click here!](#)

Kansas 4-H State Fair Rule Change Reminder

For food safety purposes, any entries with frostings and fillings must calculate the amount of sugar in the frosting/filling recipe only. Calculation must be attached to entry, or the placing will be lowered one ribbon when judged. Frosting and fillings need to contain more than 65% sugar for safety. Examples on how to calculate this percentage are included in the publication titled "[Food Safety of Frostings and Fillings](#)". This new rule was added to the 2023 4-H Kansas State Fair book, and will remain enforced.



YQCA Training

The Youth for the Quality Care of Animals (YQCA) certification training will be required for 4-H members ages 8-18 to be able to show and sell their livestock this year for fair. 7 year-olds are encouraged to attend, but will not become certified. **Species that require certification include beef, hogs, sheep, goats, poultry and rabbits.** The office will be hosting two in-person dates for members to receive their certificate. If they cannot attend either in-person date they are able to complete the training online. The first training will be Thursday, **May 9th at 6:30pm** and the second will be Sunday, June 2nd at 2:00pm. The training will be \$3/participant in-person or \$12 online. All certificates of completion are due to the office by July 8th. For questions and to register, please call the Extension Office.

RESCHEDULED

**If you registered online for the April 25th session that was cancelled due to weather, you do not need to sign-up again.

**Please be aware there is a pre-test and a post-test that are to be completed online before and after the in-person sessions.

May 2024

Sunday	Monday	Tuesday	Wednesday	Thursday	Friday	Saturday
			1 Last day to Add/Drop Projects on 4-H Online Horse ID papers due K-State Garden Hour	2	3 First Friday e-Call	4 Shutterbug Photography Workshop
5	6 AH—Meeting @ 4-H Bldg. 7pm	7	8	9 YQCA Training @ 6:30 pm Fairboard Mtg. @ 8pm	10	11
12	13 BPG—Meeting @ Henry Hall 7:30pm GEM—Meeting @ Gem Comm. Bldg. 7pm SV— Meeting @ 4-H Bldg. 7pm	14 Grant Writing Workshop- Day 1	15	16 Grant Writing Workshop- Day 2	17	18
19	20 4-H Council Mtg. 	21	22	23	24	25
26	27 Memorial Day- Office Closed 	28	29	30	31	
					PP = Pawsome Paws SS = Shooting Sports AH = Abilene Hustlers	BPG = Brewster Prairie Gem Gem = Gem 4-H SV = Solomon Valley



K-STATE

Research and Extension

Thomas County Office Complex

350 South Range Ave. Suite 16

Colby, Kansas 67701

Bookmark our website for quick reference to educational and informational resources as well as contact information for all of your questions:

<http://www.thomas.k-state.edu>

Check us out on Facebook & Twitter:

K-State Research and Extension Thomas County 4-H



K-State Research and Extension is committed to providing equal opportunity for participation in all programs, services and activities. Program information may be available in languages other than English. Reasonable accommodations for persons with disabilities, including alternative means of communication (e.g., Braille, large print, audio tape, and American Sign Language) may be requested by contacting the event contact two weeks prior to the start of the event. Requests received after this date will be honored when it is feasible to do so. Language access services, such as interpretation or translation of vital information, will be provided free of charge to limited English proficient individuals upon request.